

## DS-1299ZJ

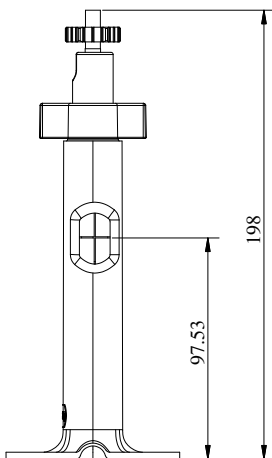
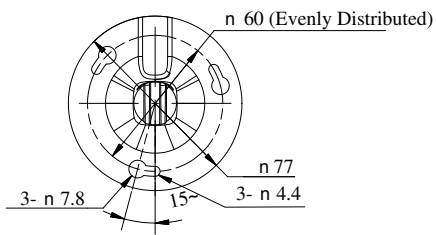
### Pendant Mount



#### Features

- Aluminum alloy material with surface spray treatment
- Design with a built-in cable hole
- Adjustable angle for installation

#### Dimension



Unit: mm

#### Available Model

DS-1299ZJ

#### Parameters

Model	DS-1299ZJ
Parameters	Pendant Mount
Appearance	Hikvision White
Material	Aluminum Alloy
Dimension	198x77x77mm
Weight	165g

#### Notes

- The bracket should be installed on flat wall.
- Waterproof rubber is necessary for outdoor application.
- The wall must be capable of supporting over 3 times as much as the total weight of the camera and the bracket.
- The maximum load capacity of the bracket is 2kg.