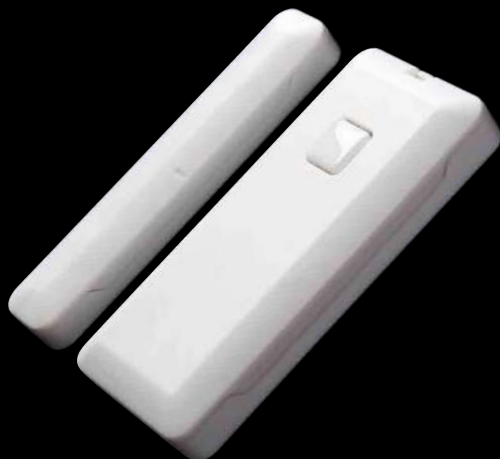


Miniature wireless contact with *Ricochet*® Mesh Technology



## The smallest wireless contact we've ever made.



Discover the new 'vanishing' wireless contact from Texecom. So small it can be concealed within most uPVC window frames, the Micro Contact-W provides unobtrusive, discreet security. Protect windows, doors and valuable assets with ease, and upgrade any security system with *Ricochet*, the world's most robust wireless security technology.

The Micro Contact-W is part of Texecom's flagship Premier Elite Series.



Texecom products are designed  
and manufactured in the UK

[www.texe.com](http://www.texe.com)

Sales: +44 (0)1706 220460

# Small in size. Packed with features.

The Micro Contact-W contains a host of advanced features.

## Now you see me. Now you don't.

The Micro Contact-W is so small it fits within most uPVC window frames, providing invisible but powerful protection. And at a diminutive 57mm x 27.5mm x 8.2mm in size, the Micro Contact-W all but disappears, even in plain sight.

## Effortless efficiency.

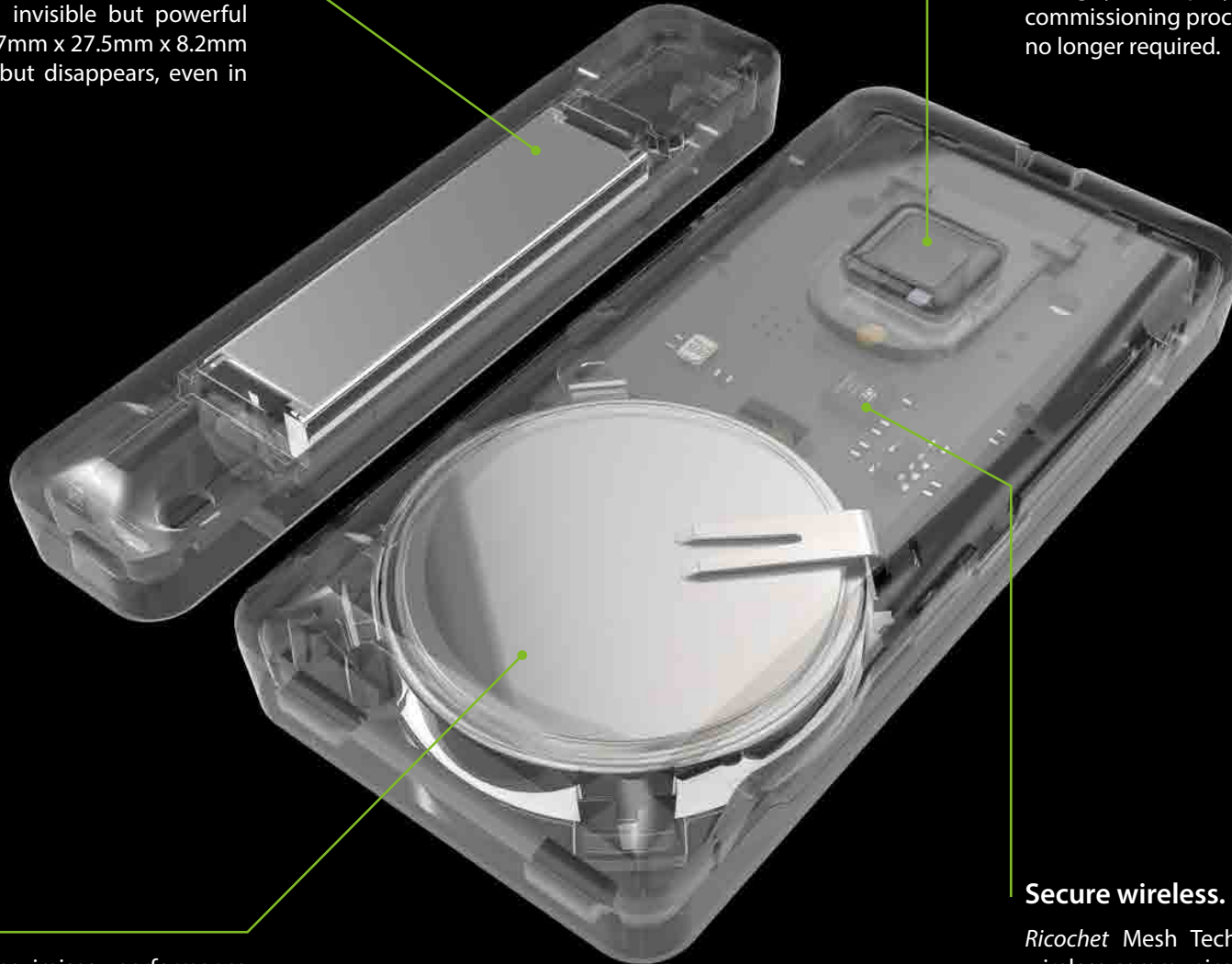
Intelligent electronic design maximises performance whilst minimising energy consumption. Achieving a staggering 4-year typical battery life from a single coin-cell battery (CR2450) the Micro Contact-W provides longer service intervals and minimal disruption.

## Install with ease.

Simple, fast and easy to setup, the Micro Contact-W is installed with a single button. With intuitive LED indications taking you step-by-step through the installation and commissioning process, trips back to the control panel are no longer required.

## Secure wireless.

*Ricochet* Mesh Technology provides secure, encrypted wireless communications with unparalleled performance. *Ricochet* enabled wireless devices receive and repeat messages from other devices. The size, scalability and range of the entire system are extended, as wireless signalling is no longer limited by point-to-point communications.



# Don't just stop at the front door.

The Micro Contact-W can be used to protect almost anything, including doors, windows, drawers and cupboards - the list is endless!



Velux window



Window frame



Bedside drawer



Drinks cupboard



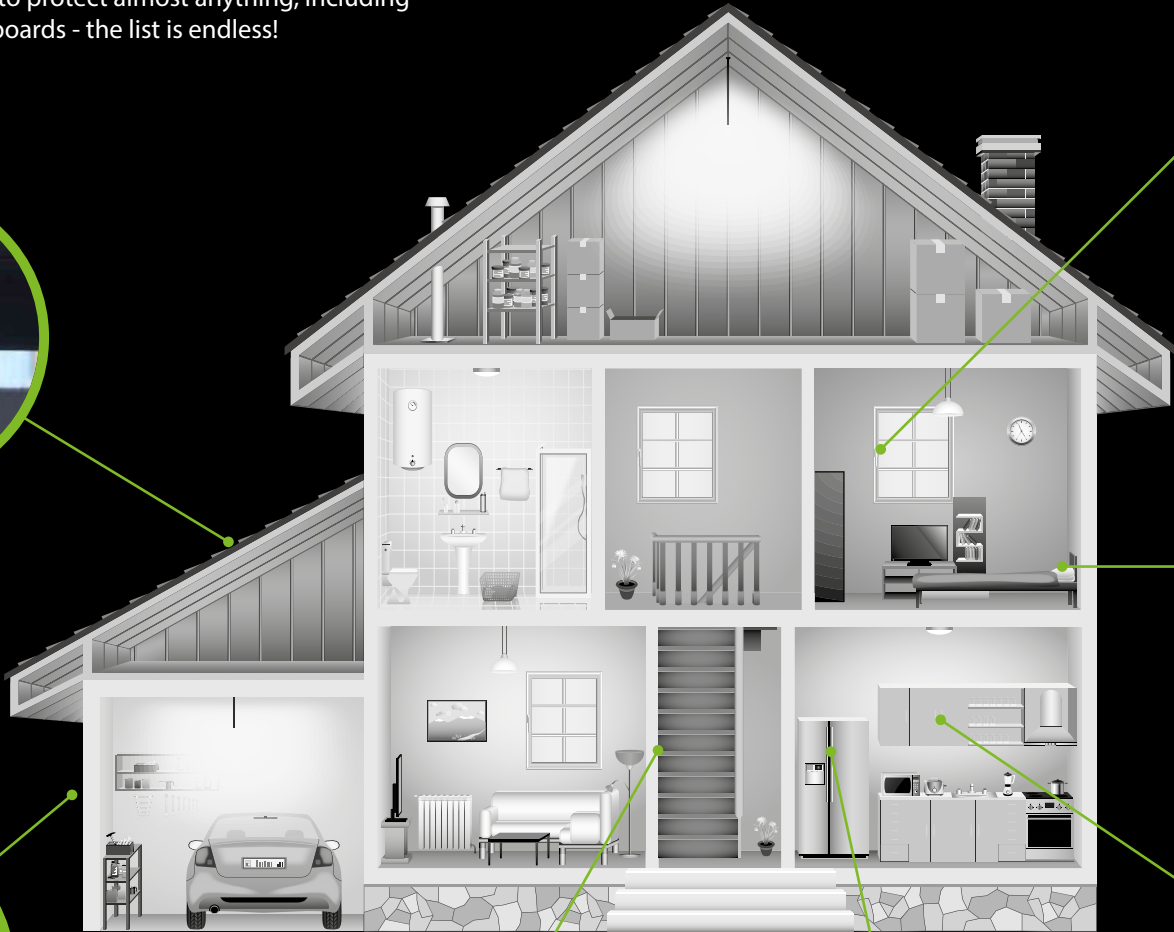
Patio door



Front & back door



Fridge door



# Designed to perform.

## It's a match.

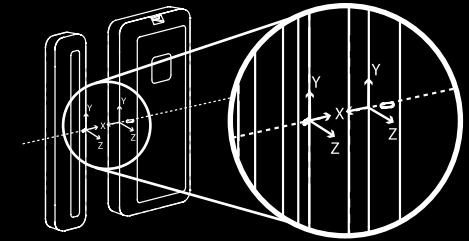
Further blending into the background, the Micro Contact-W is available in white, brown and anthracite grey, in order to match the most popular uPVC, wooden and aluminium frames.



# Technical specifications.

## Features

- Small size
- *Ricochet* Mesh Technology
- Compatible with Premier Elite control panels, Premier control panels & *Ricochet* Expansion Packs
- Cost effective
- 4-Year typical battery life
- Three colour options
- LED assisted setup procedure
- EN50131-2-6 Grade 2
- Adhesive or screw fixing options
- Shock option coming soon



Axis	Approach Min	Removal Min	Removal Max
X	18mm	24mm	37mm
Y	2mm	3mm	8mm
Z	30mm	34mm	51mm



## Now you know it works.

During installation and commissioning, the setup button features LED indications to ensure correct positioning and operation.

The LED clearly indicates the following device states:

Green LED = Magnet Secure

Red LED = Magnet Open

Orange LED = Device Tamper

The LED also indicates when learning onto the system using a flashing pink LED indication.



## Standards & Specifications

Alarm System	EN50131-2-6, EN50131-5-3, EN50131-1, PD6662, Grade 2 Class II
Product Type & Frequency Band	GHAA1000 : 868.2 – 868.4MHz
Receiver	Category 1, Class 2
Receiver LBT	Listen Before Talk
Transmitter Duty Cycle	868MHz<1%
Max RF power	10mW
Low Voltage Signal	2.80V
Operating Voltage	3V
Maximum Current	12mA
Quiescent Current	10uA
Relative Humidity	0 – 95% non-condensing

## Dimensions

