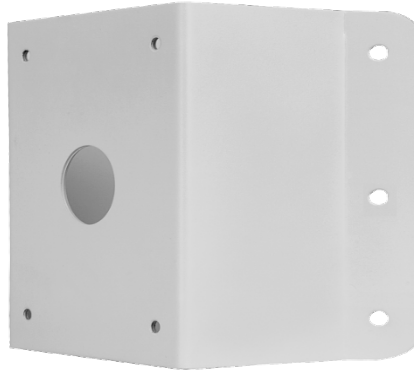


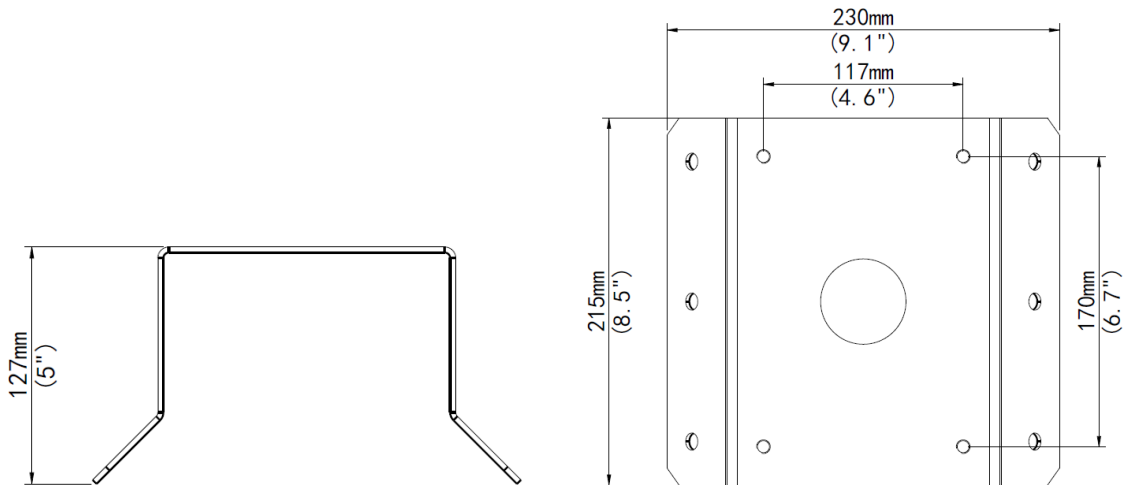
TR-UC08-B-IN PTZ Dome Corner Mount



Specifications

Bracket	TR-UC08-B-IN
Application	Indoor or outdoor, PTZ Dome Corner installation
Dimensions(L x W x H)	215mmx230mmx127mm(8.5" x 9.1"x 5")
Weight	0.73kg(1.6lb)
Material	Aluminum alloy

Dimensions



Zhejiang Uniview Technologies Co.,Ltd.

South Tower, Building 10, Wanlun Science Park, 88 Jiangling Road, Hangzhou, P.R.China 310051

Email: overseasbusiness@uniview.com; globalsupport@uniview.com

<http://www.uniview.com>

©2015 Zhejiang Uniview Technologies Co.,Ltd. All rights reserved.

*Product specifications and availability are subject to change without notice.