

Wavebeam M5

5GHz 23dBi ipMax ac Outdoor CPE

Wavebeam M5

5GHz 23dBi ipMax ac Outdoor CPE

Products Description

Wavebeam M5 5GHz 23dBi ipMax ac Outdoor CPE is designed to PtP&P2MP solutions for video surveillance transmission and wireless broadband access. Adopts of 11ac technology to deliver a high wireless rate for better performance. It features with 23dBi vertical polarization directional antenna to provide an efficient way to pick up and maintain a stable long range range connection.



Key Feature

- 5GHz 11AC 433Mbps
- 23dbi directional antenna
- One fast Ethernet Port
- IP65 waterproof enclosure
- 6000V Lightning Protection
- AP,Station,WISP operating mode supported

Product Features



20+km transmission Range

Wavebeam M5 adopts of independent external power amplifier and 23dBi directional antenna to provide an efficient way to pick up and maintain a stable signal for a wireless network up to 20km.



ipMAX--IP-COM TDMA proprietary protocol

ipMAX is IP-COM TDMA (Time Division Multiple Access) proprietary protocol to improve performance and capacity for wireless P2MP outdoor application scenarios.

In outdoor environment, the CPE use highly directional antennas to connect to the Basestation from distances that can span several kilometers. the CPE can't sense each other, they become "hidden nodes" and cannot coordinate access to the wireless channel. Thus the Basestation experiences frequent collisions from stations transmitting simultaneously. As the network scales, these collisions build up exponentially, increasing latency and lowering throughput.

With ipMAX, it coordinate all the data transmission and allocates time to active clients to provide greater noise immunity performance when compared to the conventional 802.11 CSMA/CA (Carrier Sense Multiple Access / Collision Avoidance) protocol.



iLink--Auto-bridge Technology Enable it To Easy Setup

iLink is IP-COM proprietary auto-bridge technology, It enables the CPE or basestation in factory default settings connect to each other automatically after the device is powered on. It is very useful for the person who is not familiar with network knowledge, especially for CCTV surveillance transmission application.



Multiple Application Scenarios

Long-Distance Wireless Connection

One work as AP mode and another work as Station mode to create a long distance wireless connection for video surveillance and data transmission.

WISP(Client+Router) Mode

Wirelessly connect to WISP station/hotspot to share Internet to local wireless and wired network.

Product Features



Professional Outdoor Design

Equipped with IP65 waterproof enclosure and high quality hardware design, Wavebeam M5 can work in various weather conditions, such as sunshine, rainfall or extremely low/high temperature environment

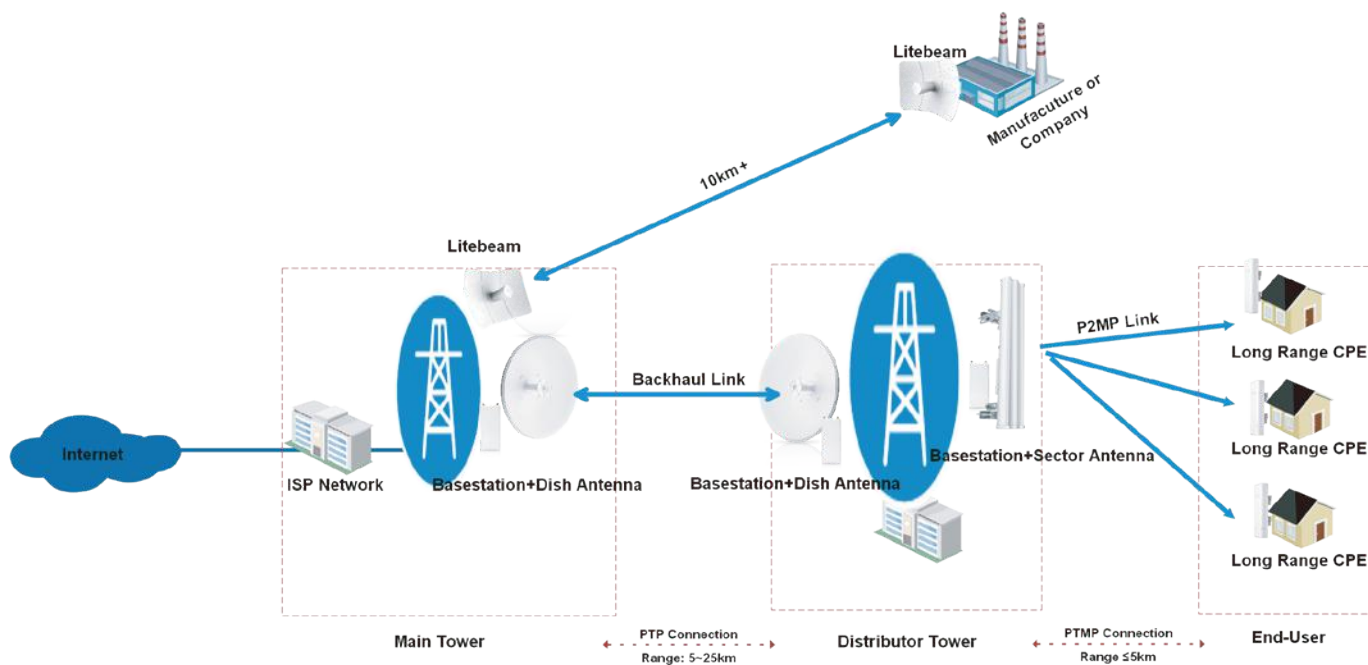


Easy to Setup and Manage

Wavebeam M5 comes with a centralized management software that helps users easily to manage all the devices in the network from a single PC-CPE Controller.

Application Scenarios

Wavebeam M5 Long Range Outdoor CPE is designed to PtP&P2MP solutions for video surveillance transmission and wireless broadband access.



Related Product



CPE6

- * 2+km transmission range
 - * 5GHz 11n 300Mbps
 - * 12dbi directional antenna
 - * IP65 waterproof enclosure
 - * 6000V Lightning Protection
 - * AP,Station,WISP operating mode supported
-



CPE12

- * 5+km transmission range
 - * 5GHz 11n 300Mbps
 - * 14dbi directional antenna
 - * IP65 waterproof enclosure
 - * 6000V Lightning Protection
 - * AP,Station,WISP operating mode supported
-



BS6

- * 5GHz 11n 300Mbps
 - * 2*RP-SMA connector
 - * IP65 waterproof enclosure
 - * 6000V Lightning Protection
 - * AP,Station,WISP operating mode supported
-



ANT19-5G120

- * 19dBi Dual Polarity Sector Antenna
 - * Frequency Range 5100~5850MHz
 - * Horizontal 120° Vertical 120° Elevation 4°
 - * 2*RP-SMA Connector
 - * 5+km transmission range with BS6
-

Specifications

Model	iLBE -M5
Dimensions	391.5*280*223mm
Deployment	Pole Mount
Application Scenarios	PtP and PtMP wireless connection for Privated ISP access or CCTV Surveillance

Hardware Specifications

Frequency Range	5GHz
Compliant Standards	IEEE 802.11a/n/ac
Private TDMA Protocol	ipMAX
Maximum Wireless Rate	433Mbps
Interfaces	1*10/100Mbps Ethernet Port
Antennas Gain	23dBi
Antenna Beamwidth	Vertical Azimuth: 10° Vertical Elevation: 10°
Reset Button	1
Power Consumption	5.5W
Waterproof Level	IP65
LED indicator	PoE/LAN,LED1,LED2,LED3
Power Method	24V0.5A Passive PoE
Lightning Protection	6000V
Passive PoE	Passive power over ethernet via PoE/LAN (+4,5pins; -7,8pins) Voltage range: 9-31VDC
Receiver sensitivity	11a 6Mbps -95dBm±1.5dBm 11n MCS7 HT20 -72dBm±1.5dBm 11ac MCS9 HT80 -64dBm±1.5dBm

Software Features

Operating mode	AP/Station/WISP/P2MP/WDS Repeater/Router
Enable/Disable Wireless Radio	Support
SSID Hidden	Support
Wireless Client isolation	Support
SSID Isolation	Support
Channel Bandwidth	20/40/80MHz

Specifications

Client Limitation For SSID	Support
Wireless Access Control	Support
Weak Signal Client Limitation	Support
Transmission Power	Adjustable power by 1dBm
WMM Capable	Support
APSD Capable	Support
Wireless Security	64/128 WEP,WPA-PSK,WPA2-PSK,WPA&WPA2-PSK,WPA,WPA2
Transparent Bridge	Support
VLAN Tagging for SSID	Support
DHCP Server	Support
VPN Pass-Through	PPTP,L2TP
Remote Web access	Support
Schedule Reboot	Support
Page Timeout	Support
Ping Watchdog	Support
Dyndns	noip, dyndns.org
Network Diagnoses	Ping, Traceroute, Signal Scan
Time&Date Setting	Support
Firmware upgrade	Support
Backup/Restore Configuration	Support
Username Management	Support
System Log	Support
Managed By Controller	PC Software -- CPE Controller

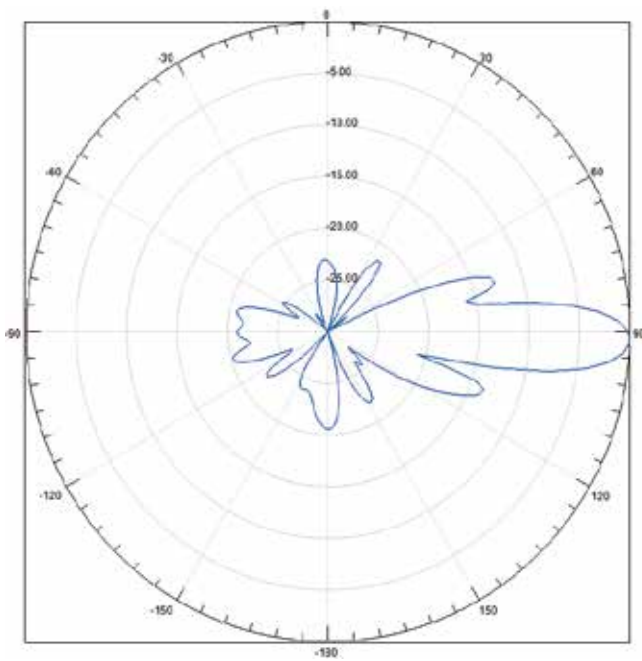
Others

Package Contents	1*5GHz 23dBi ipMax ac Outdoor CPE iLBE-M5V1.0 1*Power Adapter 1*PoE Injector 1*Quick Installation Guide
Operating Temperature	-30°C ~ 60°C
Storage Temperature	-40°C ~ 70°C
Operating Humidity	10%~90% non-condensing

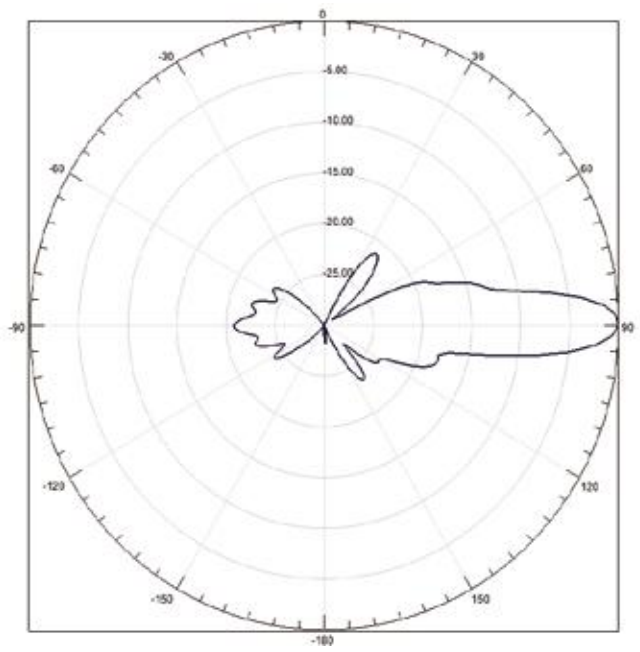
Working Environment

Storage Humidity	10%~90% non-condensing
Default login IP	192.168.2.1
Default Login Username	admin
Default Login Password	admin
Certifications	FCC/CE/RoHS

Antenna



Vertical Elevation



Vertical Azimuth



Headquarters

IP-COM Networks Co.,Ltd.

Tel: +86 755-27653089

Fax: +86 755-27657178

Email: marketing@ip-com.com.cn

Website: www.ip-com.com.cn

ADD: Tower E3, No1001, Zhongshanyuan Road, Nanshan District, Shenzhen, China.

Copyright©2020 IP-COM Networks Co.,Ltd.All Rights Reserved.

