

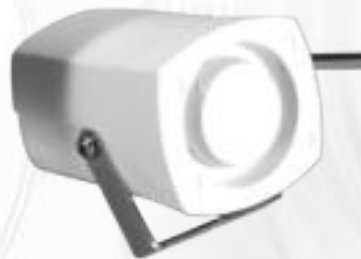
Piezo Sounders

A range of piezo electronic sounders which allow you to select the right unit according to size, sounder output and current drain requirements. The Omega includes a separate strobe input plus tamper.

Omega



SO401/WH



SOSB2L



SOSB1L



Technical Data

	OMEGA	SO401	SOSB2L	SOSB1L
Voltage	12 vdc	6 - 15 vdc	6 - 15 vdc	6 - 15 vdc
Sounder Current	120mA	160mA	190mA	85mA
Sound Output	110/95	109	111	109
Frequency Range	1.5 - 2.8 kHz	2.3 - 2.8 kHz	0.6 - 1.2kHz	1.7 - 2.4kHz
Strobe	Yes	N/A	N/A	N/A
Strobe Current	120mA	N/A	N/A	N/A
Material	Polystyrene	ABS	ABS	ABS
Size mm	133 Dia x 40	60 x 45 x 50	106 x 106 x 34	115 x 55 x 33

